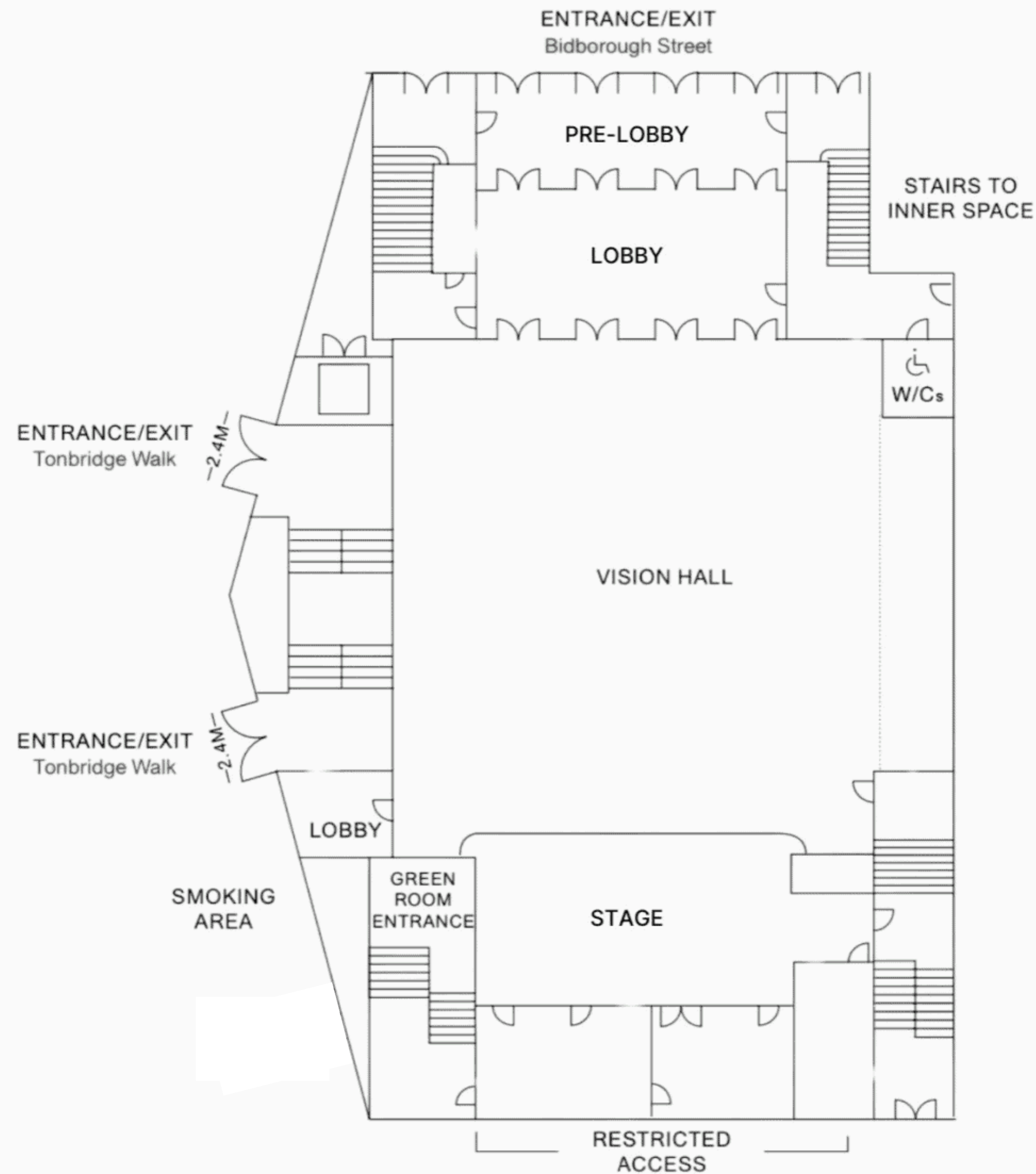


# VISION HALL

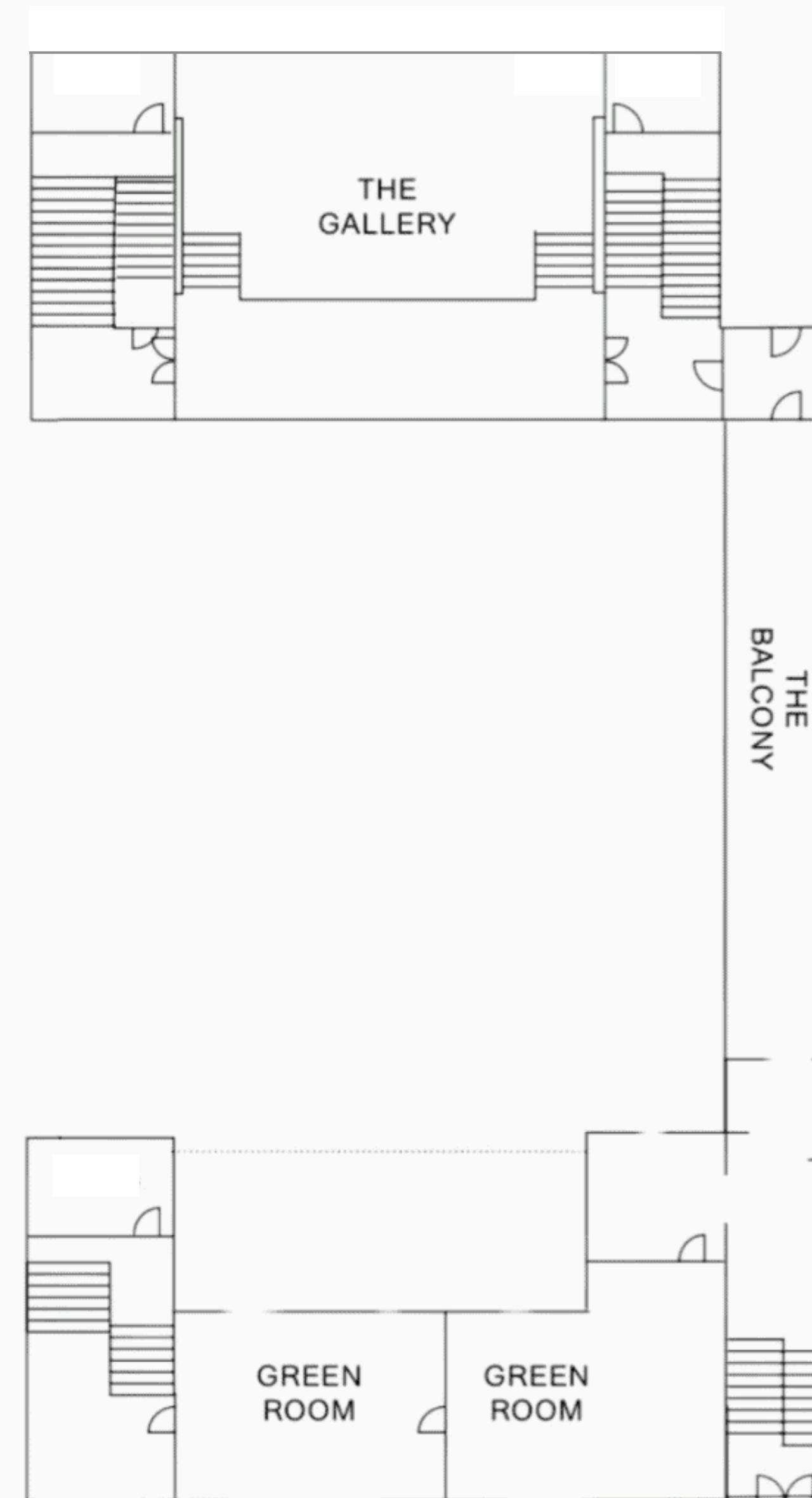
## KEY FEATURES

- Dedicated Event Manager
- 2 x AV technicians for up to 8 hours
- Cloakroom facilities
- Wheelchair accessible
- 4am alcohol and entertainment license
- Next-gen AV infrastructure
- Live broadcast and streaming capabilities
- Ceiling height 13m/42 ft
- Multiple dedicated entrances
- Natural light

## GROUND FLOOR



## 1ST FLOOR



## AREA

STANDING	BANQUET	THEATRE STYLE	CABARET
1100	420	700	280

### SQUARE METERAGE OF DISTINCT SPACES

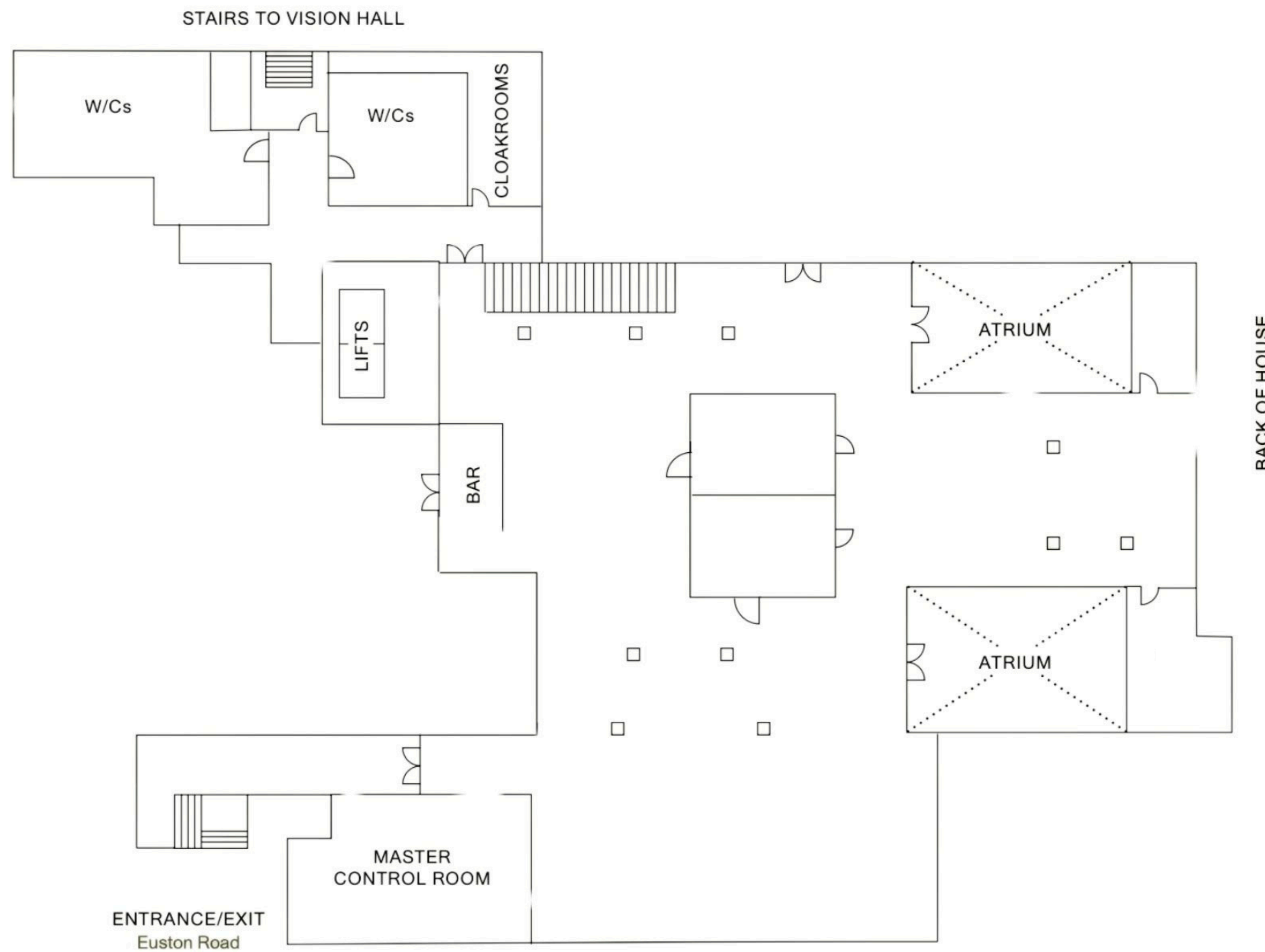
- Main Event Space:** 461 sqm (4960 sqft)
- Entrance Lobby:** 31 sqm (330 sqft)
- Lobby:** 60 sqm (645 sqft)
- Balcony:** 36 sqm (385 sqft)
- Gallery:** 95 sqm (1,020 sqft)
- Stage:** 65 sqm (700 sqft)
- Green Room 1:** 28 sqm (300 sqft)
- Green Room 2:** 23 sqm (250 sqft)

### CAPACITY

- Standing:** 1100 between main floor and mezzanines
- Banquet:** 370 on the main floor, with additional seating on the mezzanines
- Theatre:** 600 on the main floor, with additional seating on the mezzanines

Venue Hire includes access from 8am – 1am  
Additional hours available upon request

# INNER SPACE



## KEY FEATURES

- Dedicated Event Manager
- 1 x AV technician
- Cloakroom facilities
- Wheelchair accessible
- 4am alcohol and entertainment license
- Aesthetic atriums providing natural light
- Smart channel rigging system
- Fully integrated AV solution
- Natural light
- Dedicated entrance
- Seamlessly connected with Vision Hall

## AREA

STANDING	BANQUET	THEATRE STYLE	CABARET
700	300	240	65

Total Area: 670 sqm (7,200 sqft)

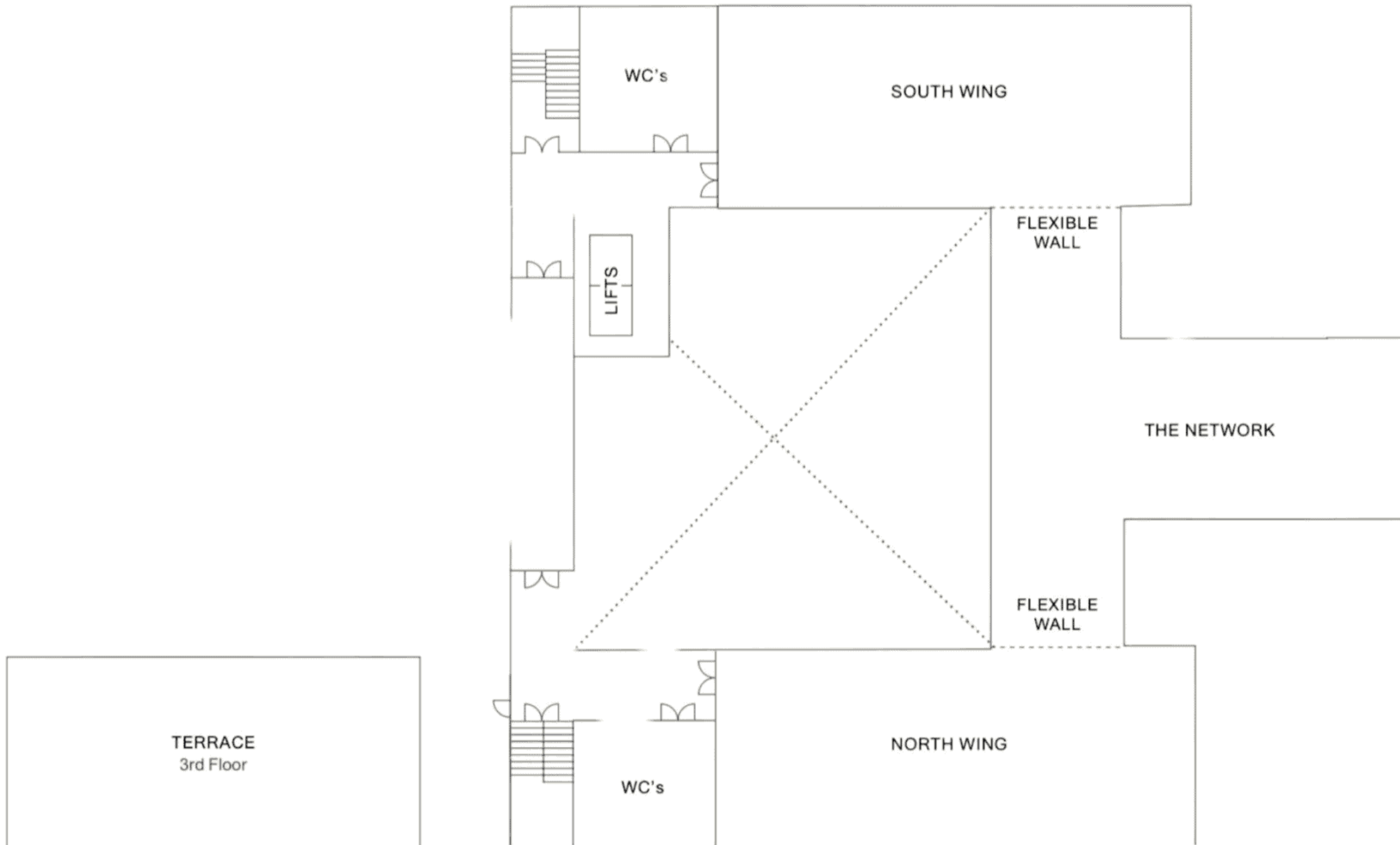
### SQUARE METERAGE OF DISTINCT SPACES

- **Main Event Space:** 576 sqm (6,200 sqft)
- **Atrium 1:** 47 sqm (506 sqft)
- **Atrium 2:** 47 sqm (506 sqft)

Venue Hire includes access from 8am – 1am  
Additional hours available upon request



# THE NETWORK



## KEY FEATURES

- Dedicated Event Manager
- Wheelchair accessible
- Elegant and modern conference space
- Luxury designer furnishings by Tom Dixon
- Fully integrated AV solution
- 2 x LED screens
- Elevated platform
- 1 x AV technician
- Natural light throughout

## SUPPLEMENT

- Outdoor private terrace with stunning views

## AREA

			
STANDING	BANQUET	THEATRE STYLE	CABARET
240	120	140	84

## SQUARE METERAGE OF DISTINCT SPACES

**South Wing:** 160 sqm (1,720 sqft)  
**The Network:** 220 sqm (2,370 sqft)  
**North Wing:** 160 sqm (1,720 sqft)

## CAPACITY

Total: Up to 240 people

**Theatre:** 150 (fixed layout with luxury Tom Dixon fat chairs)

**Standing:** Up to 240 people

Venue Hire includes access from 8am – 6pm

Additional hours available upon request